

# NORTHEAST KINGDOM TOUR

September 26, 2007 Harvest Moon

10:ish am **Barre Price Chopper** Aisle 14



Got lost trying to find it. I hate MapQuest. Turns out this store is actually in Berlin. It's one of the "smaller" Price Choppers. Everyone who shops here reminds me of my mom and dad. They look and walk and talk like them! Sorta felt like I was in Nebraska.

I switched out the big display for a smaller one and I think it's perfect for now. The location within the store is perfect, I think. Really stands out. I met Hal and he was so nice and had a great handshake. He liked the new display and commented about the coffee selling well. He didn't know about the rotation date on the bag so I showed him. He said he'd pass this information on to the people who stock the coffee.

11:43 am **South Barre Hannaford's** *Nature's Place* by the baked goods  
Left at 12:36 after cleaning, rotating, and switching out some old coffee. Pam is on vacation but I met Jim who was very nice and was glad to know about the rotation numbers on the bags. He said he'd pass that information on to Pam.



1:14 pm **Plainfield Co-op** – Route 2 enroute to St. J

This is Chuck and this is the Plainfield Co-op. It looks like all co-ops use to look like when they started out. I had flashbacks of Onion River Co-op, where I worked, [now City Market] where there was no such thing as a grocery cart, and where we handmade all the signs, and only one person could fit in an aisle at a





time! This was a quick stop, as I've always wanted to see it. Chuck buys the coffee for Retail and for Bulk. Right now he carries Tres and French in Bulk but would like to switch out the Tres. I told him of the other varieties and he's interested in Full City or Town & Country.

Jen works there, too, and when she heard I was in the building she came rushing to me to tell me how much she LOVES our coffee. I think she's the most enthusiastic coffee lover I've met. She buys a 5# bag once a month and is so pleased with herself for the money she's saving. She also buys some retail bags because she said she has a drawerful of them and wondered what she could get for redeeming them. I guided her to the website, where I said I'd post this picture of her.

Another girl who works there is Liz, who's favorite section is the the bulk Herbs. She took the Herb Course same as me.



2:40 pm leaving **St Johnsbury Price Chopper**

It was a gorgeous drive to St. Johnsbury on Route 2. The leaf color is at peak up in that neck of the woods. There were so many spots I want to stop and explore sometime. A couple thrift stores, a bakery in Marshfield, a yarn store.

The Price Chopper was right off Route 5. Keith Auister wasn't in so I spoke with 'the other'

Keith, who is an Assistant Manager. Nice guy. I rotated and cleaned the display and only had to switch out a couple bags of coffee. This store could also use a short display and do just fine. All the pricing signs were handwritten which I thought was really odd for a chain store. I pointed this out to Keith and told him how the other stores did it. He grabbed his magic gun [like what the Receivers use] and scanned the bagged coffee and seconds later said, "consider the signs made, they should be here next week." Wow! Next time I'll ask for a house and a new truck!

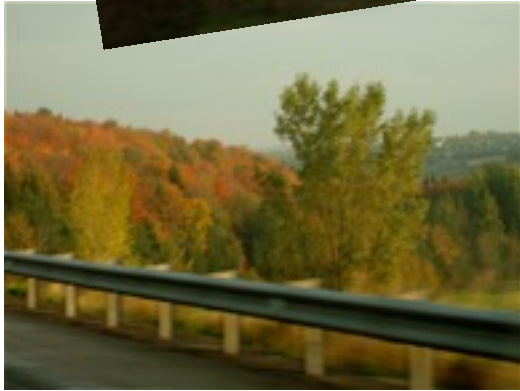




### 4:00-ish Derby Price Chopper

Wow! Wow! Wow! What amazing landscape up there! And in some places not a house or building to be seen. It was so refreshing, but it made me realize how 'built-up' we are down this way.. . with houses interrupting the mountainsides. I've never been up that way before and am so glad I ventured up when I did. I would recommend everyone to ramble up there sometime and check it out, but I'm afraid you won't want to leave, so I'm not going to.

Gary was at the Price Chopper and very helpful, I also met Beth, who stocks the coffee. It was getting late and I knew I had a long trip home so I didn't venture around Derby like I wanted to. Next time.



### 296 miles and 12 hours later . . . . .

*Lily signing off*

